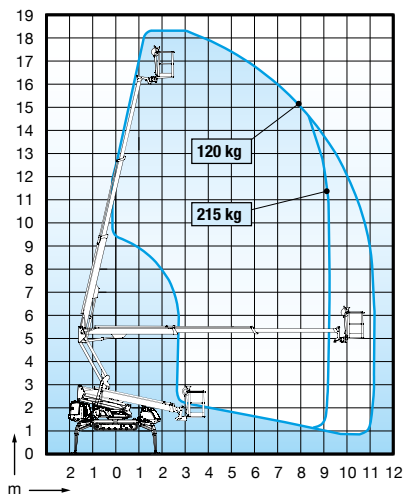


DINO® 185XTC II

- Working height 18.50 m
- Excellent gradeability 43%
- Levelling to the max. inclination 16°
- Trailer DT 3500L available for easy transport

Technical data



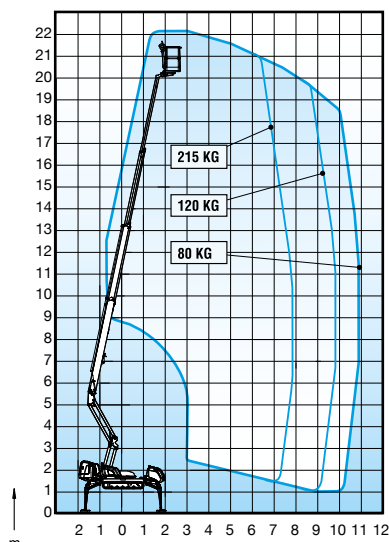
Max. working height	18.50 m
Max. platform height	16.50 m
Max. outreach	11.20 m
Support width	3.54 / 3.95 m
Lifting capacity	215 kg
Basket size	0.7 x 1.3 m
Boom rotation	cont.
Basket rotation	180°
Boom control	proport.
Transport length	5.95 m
Transport width	1.18 m
Transport height	1.98 m
Weight	2900 kg
AC socket in the basket x 2	std
Diesel engine	std
Length of tracks	1.93 m
Gradeability	43 %
Max. levelling inclination	16°
Drive speed	1.4 / 2.4 km/h
Radio control	option
Automatic levelling	option
Electro motor	option



DINO® 220XTC II

- Working height 22.10 m
- Excellent gradeability 43%
- Levelling to the max. inclination 16°

Technical data



Max. working height	22.10 m
Max. platform height	20.10 m
Max. outreach	11.00 m
Support width	3.54 / 3.95 m
Lifting capacity	215 kg
Basket size	0.7 x 1.3 m
Boom rotation	cont.
Basket rotation	180°
Boom control	proport.
Transport length	6.45 m
Transport width	1.18 m
Transport height	1.98 m
Weight	3100 kg
AC socket in the basket x 2	std
Diesel engine	std
Length of tracks	1.93 m
Gradeability	43 %
Max. levelling inclination	16°
Drive speed	1.4 / 2.4 km/h
Radio control	option
Automatic levelling	option
Electro motor	option

